

## Claiming

Since 1st August 2019, it has been possible to automatically apply for BuT benefits together with benefits from the Jobcenter (SGB II).

## Additional tutoring

The teacher responsible fills in and countersigns the form „Anlage C“ to confirm the request is required. We then check that the conditions are met before accepting the costs.

## Reimbursement

We need proof of the expenses (costs). You can use our forms for this.

If you can prove that you paid in advance, the costs can also be reimbursed directly to you (does not apply to additional tutoring).

You can obtain the forms from your Jobcenter or on the Internet at [www.jobcenter-stade.de](http://www.jobcenter-stade.de)



## Contact

### Jobcenter im Landkreis Stade Bildung und Teilhabe (BuT)

Am Güterbahnhof 8  
21680 Stade

Telefon: +49 (4141) 926 926



# Bildung und Teilhabe (BuT)

## Education and participation grants for children and young people up to 25 years.

Do you receive benefits from the Jobcenter? Then you can get more support for your child/children.



Produced by Jobcenter im Landkreis Stade, Juni 2024



## Lunch

Does your child get lunch in the crèche, kindergarten, day care, after-school care centre or school?

The costs can be covered in full if proof is provided.



## School supplies

Does your child go to school?

Then for such things as schoolbags, sports equipment, writing, arithmetic and drawing materials, you will receive in 2024 130,- € in the first half of the school year and 65,- € in the second half of the school year (this is adjusted annually).



## Getting to school (from the 11th class)

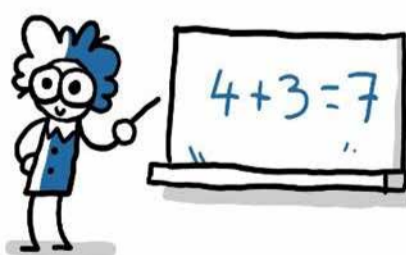
Does your child take public transport to the nearest school? We will check for you, if your child's travel costs can be reimbursed, provided the one way distance is a minimum of 5 kilometres.



## Excursions/class

Does your child go to kindergarten or school and would like to take part in an excursion or a class trip?

The costs can be covered in full if proof is provided.



## Additional tutoring

The teacher responsible fills in and countersigns the form „Anlage C“ to confirm the request is required. We then check that the conditions are met before accepting the costs.



## Participation

Is your child under the age of 18 and do you pay membership fees e.g. for a sports club? Does your child take part in a leisure activity or receive music lessons, etc.? The costs can be supported with a 15,- € monthly lump sum payment to you if proof is provided.